



NEW



DUAL CARBURATION

GREEN/SERIES



POWER MIXED ROTOR



ECO MIXED CHIPS



BIO DEGRADABLE LUBRICANT



DRI SYSTEM



CO2 REDUCTION Option



180° ADJUSTABLE CHIMNEY



SILENT BLOC



HYDRAULIC CLUTCH



ELECTRIC CONTROL



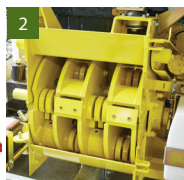
PILOT SYSTEM SWING



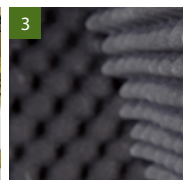
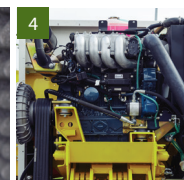
UNEMPLOYED POWER, MAXIMUM EFFICIENCY AND PROVEN ERGONOMY

**1 - HOPPER**

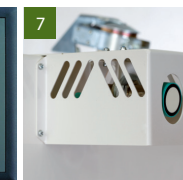
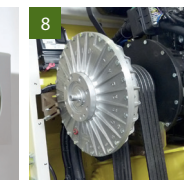
- a) Transparent curtain
b) Easy-to-use safety mechanism with electronic control
c) Hopper with air intake under the feed belt (50 cm wide as standard): improves discharge capacity by 25%

**2 - PATENTED POWER MIXED ROTOR**

New design: 4 rows, 24 hammers with replaceable heads and 8 cutting blades

**3 - DRI-SYSTEM NOISE INSULATION CASING** permits ease of access to all components**4 - KUBOTA WG 3800 GL ENGINE** Working both with petrol & gas**5 - HEIGHT-ADJUSTABLE DRAW BAR** with simple crank adjustment**6 - «SWING» PILOT SYSTEM**

The machine configures 3 three different engine speeds with the chipper-shredder's performance data – depending on the material to be chipped, the number of feeds and the velocity of the feed

**7 - CO2 REDUCTION SYSTEM OPTION****8- HYDRAULIC SAFETY CLUTCH** Thermal safety 180°

TECHNICAL DATA

Product code	GSCOBRA90PGS	Feed roll diameter	395 mm
Engine	KUBOTA WG3800 GL 88 HP (Petrol) 94 HP (Gas)	No of axles	1/2500 kg
Engine swept volume cm3	3800 4-Cyl.	Allowable road weight axles	
Fuel	Petrol / Gas	Tyre dimensions	215R14C
Clutch	Hydraulic clutch	Tank capacity	50 L + 13 kg Gas
Cowling	DRI Soundproofing	Multidirectional chimney	180°
Admissible diameter	21 cm	Chimney outlet height	2250 mm
Output	40 m3/h	Machine weight	2150 kg
Rotor diameter	560 mm	MMTA trailer approval	2200 kg
Rotor weight	270 kg	Hopper dimensions (LxW)	1600 x 1630 mm
Hammers	24	Hopper loading height	700 mm
Knives	8	L x W x H	4710 x 1960 x 2500 mm
Feed roll width	500 mm		
Feed conveyor	500 mm		

TS INDUSTRIE®